



Whale of a Time™

Creative Workshops on Environmental Issues

www.whaleofatime.org

Unit 1, 80 Sunnyside Road, London SW16 2UL
workshops@whaleofatime.org +44 (0)20 8123 0325



About the Whale of a Time Workshop

We organise creative workshops on environmental issues to encourage active participation living a sustainable lifestyle inspired by a positive attitude.

The Whale of a Time Workshop is a fun and hands-on activity, where young and old are able to model whales and other endangered species out of clay, and at the same time learn about the environment, biodiversity and sustainability.

The workshop is an attraction that can be hired for shows, at exhibitions, museums and festivals, and by schools and youth clubs. It has been run successfully at the Earl's Court Boat Show, Streatham Festival and the Big Green Gathering and many other events. It is an attraction that you can include in your event and also use to enhance your "green credentials".



. (Creative . Educational . Fun .)



Kids and families love the workshop and it's a great way to entertain people at your events. ([Comments](#))



The workshop theme can be adapted according to the theme of your event. ([Themes](#))



It's is a great way to enhance your green credentials while raising awareness of environmental issues. ([Gallery](#))



In 2009 we have been finalist at the London Archant Environmental Awards.



People love the Whale of a Time Workshop!

Hedre (mother, 44) said, "What a wonderful idea to make the children - young and old - aware!"

Celine and Nianh said, "Children loved the workshop last year and have returned to mould clay again"

Nathalie (mother) and Isabelle (daughter) said, "Had a lovely, fun time making animals with clay with friendly, helpful staff. Good luck with all your work."

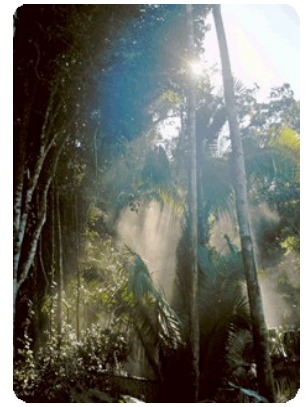


Photo: Elle Macpherson and children at Earl's Court Boat Show

Need to cover a specific theme?



Environment	Geography
Endangered Species	Wild Europe
Marine Species	Wild Africa
Rainforest	Atlantic Ocean
Your theme*	Your theme*



The workshop can be described as a sculpture or pottery workshop. Clay-sculpting of endangered species turned out to be of great benefit to the community and our planet as it is a wonderful and unique way of conveying the message and its urgency for change in a fun and active manner.

The workshop themes make the Whale of a Time Workshop unique of its kind. Depending on the chosen themes these could be a model of your favourite animal or plant species, native animal and plant species, endangered animal and plant species, ecosystems of different places around the world or your fantasy creature.

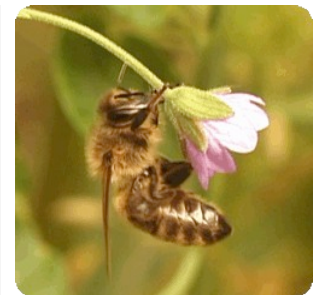
We offer custom designed workshops adapted according to your specific needs. You can choose endangered species, as well as geographic areas of specific ecosystems e.g. The Amazon. The workshop themes can be adapted and your unique workshop can be conceptualised according to your requirements.



Environment & Geography

The themes of Environment and Geography aim to bring us closer to our roots in nature and with the planet.

During the Whale of a Time Workshop we facilitate a safe and inspiring environment for participants to explore and express themselves in their personal and unique ways. Each individual chooses an animal or plant species that is threatened to go extinct in the near future, if we don't do something about it. Participants use wildlife photography for inspiration to build a unique model of their favourite species. We work in groups or individually, watch wildlife documentaries, guess animal sounds (where technology is available), do a quiz and nature trails. We go on to look at the human impact on our planet, our health and ways of living a sustainable lifestyle.



Learning Creatively through Exploration

Our creative eco-message focuses on the beauty of life, the role of biodiversity for a healthy ecosystem, which is intrinsically interlinked with human welfare. We believe that only if we understand the true beauty we can appreciate what we have and have the will and passion to save it. All models are displayed during the workshop in the Whale of a Time Gallery.

The workshop methods are based on basic modeling techniques, where people learn how to sculpt and explore the natural world. Clay is a product of the Earth and therefore the clay-sculpting workshop resonates with grounding energy helping us to connect with our roots with our planet.

During the workshop participants are able to express and release their emotions through touching and shaping clay. Clay-sculpting is therapeutic and helps to release stress and tension while connecting with our inner feelings and our creativity. The workshop supports this journey of transformation and brings healing and wellbeing for participants. The artistic process is supported by creative workshop leaders who have been trained in working with children and adults of all age groups.

Flexible & Mobile

The Whale of a Time Workshop is flexible, mobile, and easily adaptable, and can be hired as an attraction for your families and kids area at your events, indoors and outdoors. We also offer advanced level sculpting workshops for adults. You can choose between half day and full day workshops. There is a special discount for workshops lasting more than one day.

Small & Large Groups

At shows, exhibitions and festivals we usually cover large groups - up to 500 visitors per day. During the workshop people get the opportunity to wander in and get creative having a whale of a time.

We also cover small groups - up to 30 people. The programme can be adapted according to your needs.

Please contact us to discuss your group requirements.

Whale of a Time Gallery

We set up the Whale of a Time Gallery during your event where all the masterpieces are exhibited. After the event is finished the models will be displayed online at the Whale of a Time Gallery. Please also view videos of the workshop at the Whale of a Time Gallery.



Past Clients Comments



At previous events, organisers have included the Whale of a Time Workshop as an attraction in their family and kids programme and used it to enhance their green credentials.

We have run the Whale of a Time Workshop successfully at community events including Streatham Festival, Stockwell Festival, Poplar Festival, Young Carers Youth Club and UK festivals including the Waveform Festival, the Big Green Gathering, Sunrise Festival, the Glade and many other events. At the Earl's Court Boat Show and the Sail, Power & Motor Show at the London Earl's Court Exhibition Centre we provided the main attraction for a children and family area with the theme Marine Species. We received the Making a Big Difference Award in Lambeth to run a workshop at the Lambeth Country Show 2010.

James Brooke, MD Sail, Power & Motor Show, said, *"Thank you so much! You've made the show!"*

Anna Godsiff, Stockwell Festival Manager said, *"As always you were fantastic - comments from our evaluators were that Whale of A Time are always busier than the Expo tent! - You have a truly brilliant activity with a great message attached - all down to your passion and commitment - always such a pleasure working with you."*

Claire Horan, Stockwell Festival (2009) said, *"They're as good as gold!"*

Anna Godsiff, Streatham and Stockwell Festival Manager (2008) said, *"Whale of a Time is number one on my list for childrens' activities."*

We'd be delighted to run a workshop for you and provide an area of entertainment with educational purpose and add a creative environmentally conscious element to the ambience and attraction at your event.

Have a whale of a time! ☺

Call us now

020 8123 0325

Get a quote by email at workshops@whaleofatime.org

View our website at www.whaleofatime.org

