



Whale of a Time®  
Creative & educational for young & old  
[www.whaleofatime.org](http://www.whaleofatime.org)



## About the Whale of a Time Workshop



Whale of a Time is organising holistic and participatory events on environmental issues with the aim to encourage sustainable living inspired by a positive attitude.

We work largely with young people at public events, local community festivals, as well as youth clubs and schools promoting ecological awareness. Our work has been recognised by many national community and environmental awards schemes.



Whale of a Time events have been run successfully at WhaleFest in Brighton, Mayor's Thames Festival, National Living Seas Programme at the National Marine Week, Lambeth Country Show, London Green Fair, Earl's Court Boat Show and many local community events across London and the UK.

The Whale of a Time® Workshop is an educational, therapeutic, hands-on and fun activity, where young and old are able to model whales and other endangered species out of clay, and at the same time build creative skills whilst learning about the environment, biodiversity and sustainability and having a whale of a time!



Andy (age 13) commented, *"It was the best event of the whole festival!"*

Richard Yeoward, former Vice President at WWF UK commented, *"Conservation works best when the people are involved."*



**Creative & Educational for Young & Old: Family & kids area at your event!**

Whale of a Time Gallery: [www.whaleofatime.org/gallery.php](http://www.whaleofatime.org/gallery.php)



**Promote your "green credentials" & ecological awareness whilst supporting community & environmental wellbeing!**

Whale of a Time Workshop Information (online): [www.whaleofatime.org/workshops.php](http://www.whaleofatime.org/workshops.php)



**Therapeutic & Environmentally-friendly: Clay modeling is fun and relaxing and clay is non-toxic!**

Whale of a Time Reviews: [www.whaleofatime.org/reviews.php](http://www.whaleofatime.org/reviews.php)



**Public Events & Schools: Mobile, outdoors and indoors!**

Whale of a Time Requirements: [www.whaleofatime.org/requirements.php](http://www.whaleofatime.org/requirements.php)



**Capacity of up to 500 participants per day!**

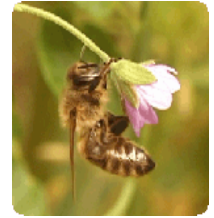
Whale of a Time Comments: [www.whaleofatime.org/comments.php](http://www.whaleofatime.org/comments.php)



Each individual chooses an endangered animal or plant species. We work from wildlife photographs and participants create their personal art pieces, whilst exploring the natural world. The workshop methods are based on modeling techniques, where participants learn how to use clay-sculpting tools whilst discovering their artistic skills.

- **Creative and educational for young and old!**

During the Whale of a Time® Workshop we facilitate a safe and inspiring environment for participants to explore and express their creativity. The artistic process is supported by creative workshop leaders, who have experience working with children and adults of all age groups. Workshop leaders hold a CRB.



Rowlands, Co-Founder Planet Whale, WhaleFest commented, "A big part of what's made this event so cool is having Whale of a Time here. The kids have loved it. It's been a huge buzz all around the stand all day. The best thing we ever did was have these guys come here."

Tiphaine Tailleux, Project Manager, Mayor's Thames Festival commented, "An absolutely brilliant way to spend an afternoon by the Thames, come rain or shine. Thank you Whale of a Time for inspiring children to take an interest in our fellow creatures whilst making beautiful clay sculptures at the same time. We loved having you at the Thames Festival for a fourth year running!"

- **Promote your "green credentials" & support ecological awareness!**

If we see the true beauty in nature, we can appreciate what we have and have the will and passion to save it.

Mark Brownlow, BBC Producer, "Ocean Giants", commented, "It's things like this, which will really inspire people to get aware of the plight of whales and dolphins and do something about it. It's a fun way of engaging people."

Andy Hope, Green Roadshow Organiser commented, "Once again it was wonderful to have you all along - your enthusiasm and commitment to educating the kids about marine life is refreshing and just what the planet needs."



Community wellbeing is intrinsically interlinked with a healthy ecosystem. Clay-sculpting is therapeutic and participants have the opportunity to find their roots in nature.

- **Support community wellbeing!**



Lucy Smith, Public Health Manager at NHS Lambeth, said: "As part of the Lambeth mental wellbeing programme and work to improve access to psychological therapies, we have funded these workshops with the aim of increasing awareness of ways in which people can actively improve their wellbeing."

Syed Haque, Community Leaders and Engagement Manager, Strategic Commissioning and Community Directorate, London Borough of Newham commented, "Whale of a Time clay modelling was by far one of the most popular intergenerational activities at the event."



- **Workshop Capacity: Up to 500 participants per day!**

During the event participants have the opportunity to wander in and out and get creative whilst bonding with families and friends in a community environment and having a whale of a time! Maximum capacity at any one time is 60 participants.

Venetia Harpin, Events Officer, Lambeth Events Service, commented, "Whale of a Time once again to be a very popular workshop at this year's Lambeth Country Show. It was great that they were so organised, with plenty of helpers on hand. By the end of the afternoon we had tables and tables of wonderful animals!"



- **Public Events & Schools: Mobile, outdoors and indoors!**

The Whale of a Time® Workshop is mobile and can be hired to complement educational projects at schools, as well as an attraction for families and kids areas at community events, exhibitions and festivals, outdoors and indoors.

Anna Godsiff, Streatham and Stockwell Festival Manager said, "Whale of a Time® is number one on my list for children' activities."



Jo Hill, Science Week Coordinator, Hawthorn School, "Thanks again for a fantastic day - I know all the kids had a great time."

Loretta Hoy, Beam Parklands Community Ranger, London Borough of Barking & Dagenham commented, "Many thanks to your team! Absolute pleasure to have Whale of a Time there. As always the workshops proved extremely popular. The friendly, professional and approachable staff is an asset to Whale of a Time. The children who attended the event had a whale of a time, as did the fellow rangers and myself!"

- **Whale of a Time® Gallery**

All artwork is displayed in the Whale of a Time® Gallery during the events and online: [www.whaleofatime.org/gallery.php](http://www.whaleofatime.org/gallery.php)



<http://www.whaleofatime.org/community.php>



<https://twitter.com/whaleofatimeorg>



<https://www.facebook.com/haveawhaleofatime>



<http://www.haveawhaleofatime.blogspot.co.uk>



<http://www.youtube.com/haveawhaleofatime>



<https://gogetfunding.com/whale-of-a-time-educational-workshops-on-environmental-issues>



[info@whaleofatime.org](mailto:info@whaleofatime.org)

[www.whaleofatime.org](http://www.whaleofatime.org)



